



2019 Asian Evaluation Week

Quality Evaluation for Better Results: Local,
National, Regional Perspectives

2-6 September 2019 | Kunming, People's Republic of China

Where is the evidence? 3ie's Experience with Evidence Gap Maps and an Example of Climate Change Interventions

Emmanuel Jimenez, Executive Director, International Initiative for Impact Evaluation, 3ie

Session 29: New frontiers in impact evaluation: taking stock of evidence and defining future directions

5 September 2019, 11:00-12:30



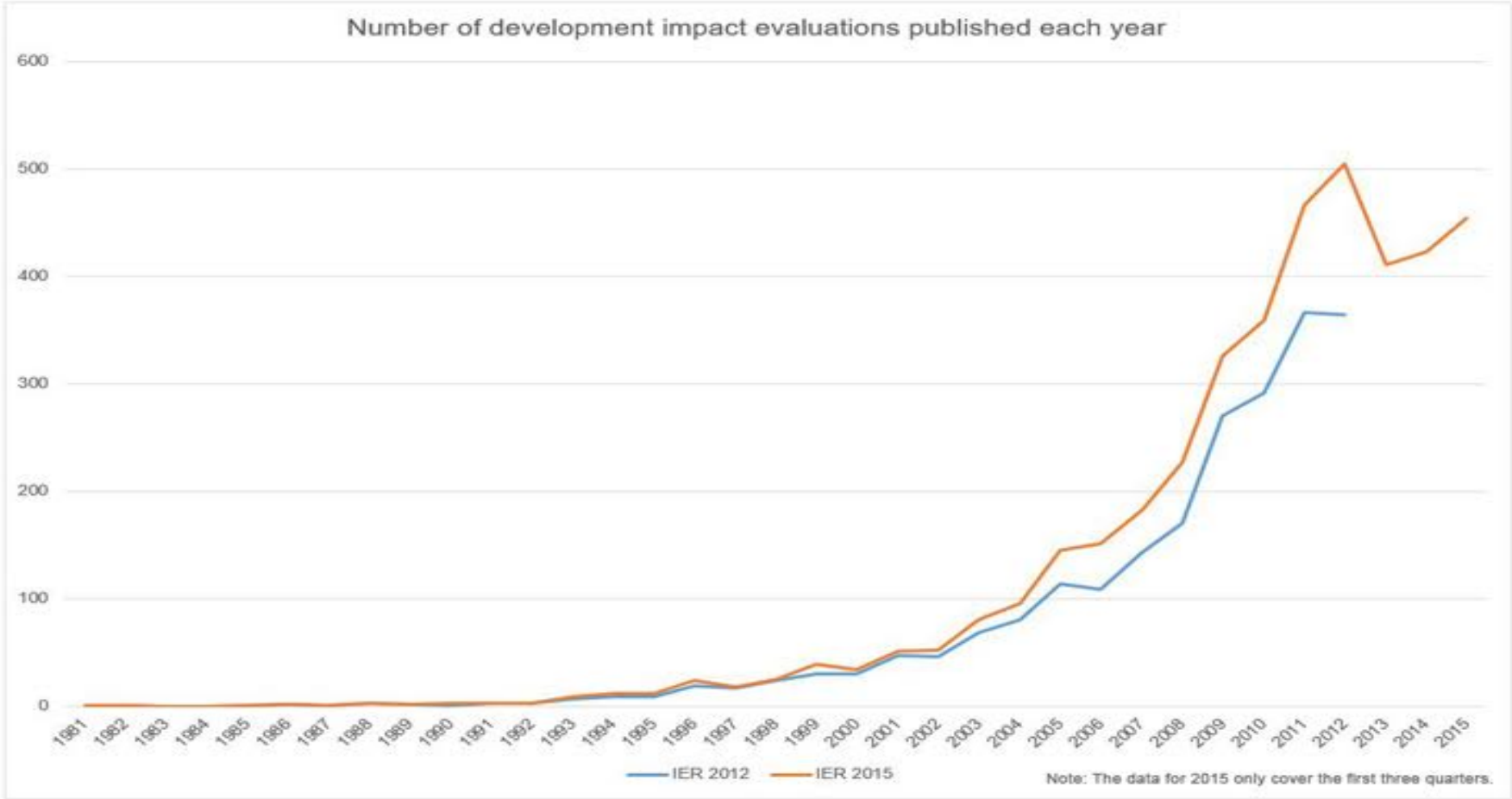
Who we are & what we do

3ie is a global leader in the generation and use of evidence for decision making

- **Funds, produces, quality assures** and synthesises rigorous evidence on development effectiveness. We support evaluations and reviews that examine what works, for whom, why and at what cost in low-and middle-income countries. We are an efficient grant maker as well as producer of evidence.
- **Builds and facilitates** networks of evaluation to improve capacity and commitment to generate and use evidence in decision-making
- **Provides global access to** knowledge products for policymakers, programme managers, researchers, civil society, the media and donors



Shifting Evidence Gaps: Number of IEs have grown dramatically



Source: Cameron et. al 2015 and 3ie Repository



2019 Asian Evaluation Week, 2-6 September 2019, Kunming, People's Republic of China



Innovative Syntheses of Evidence

Synthesis now even more important than ever

We are drowning in information, while starving for wisdom. The world will henceforth be run by synthesizers... (E.O. Wilson)



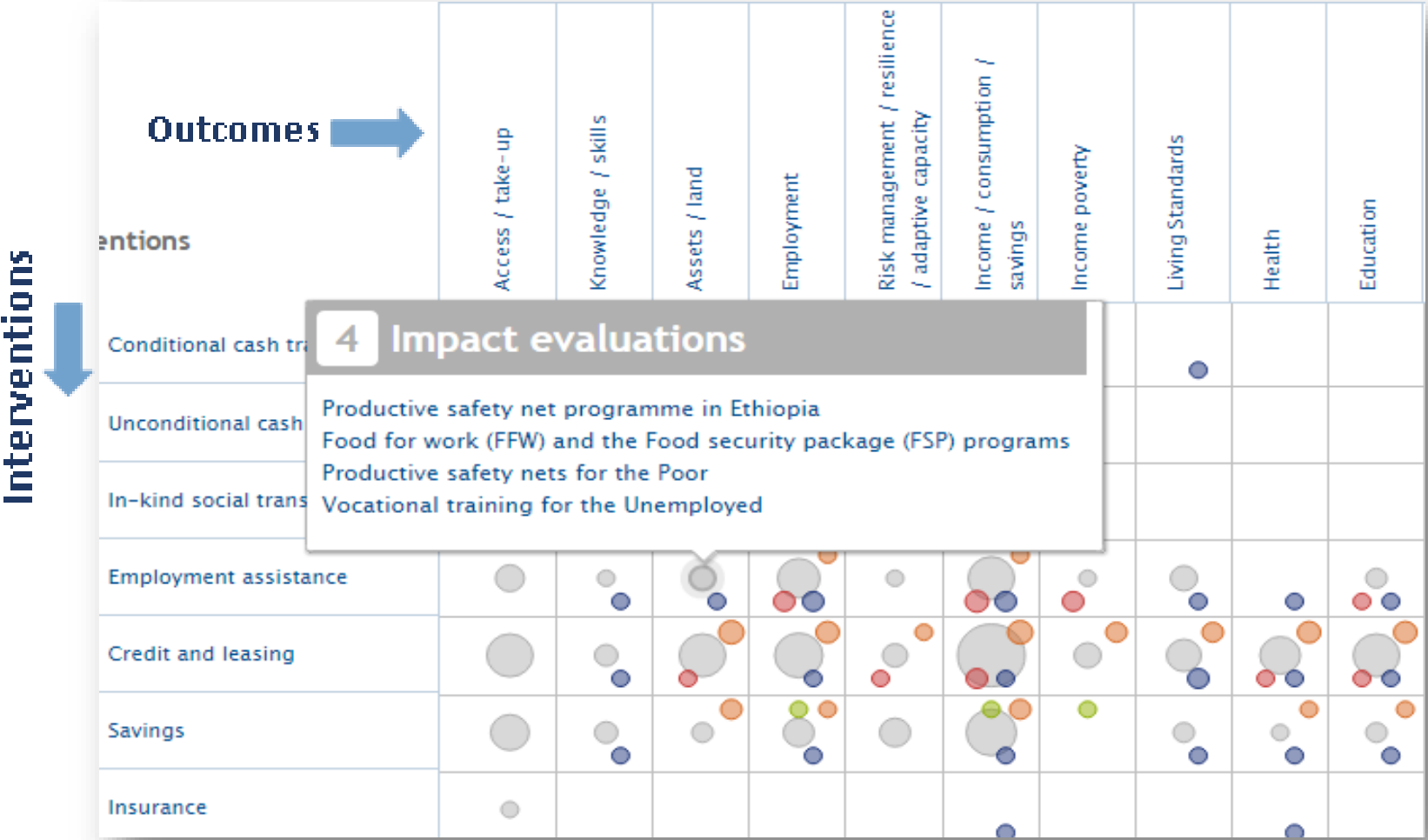
The evidence landscape: looking for the big picture

Where can I get
a quick snapshot
of available
evidence?

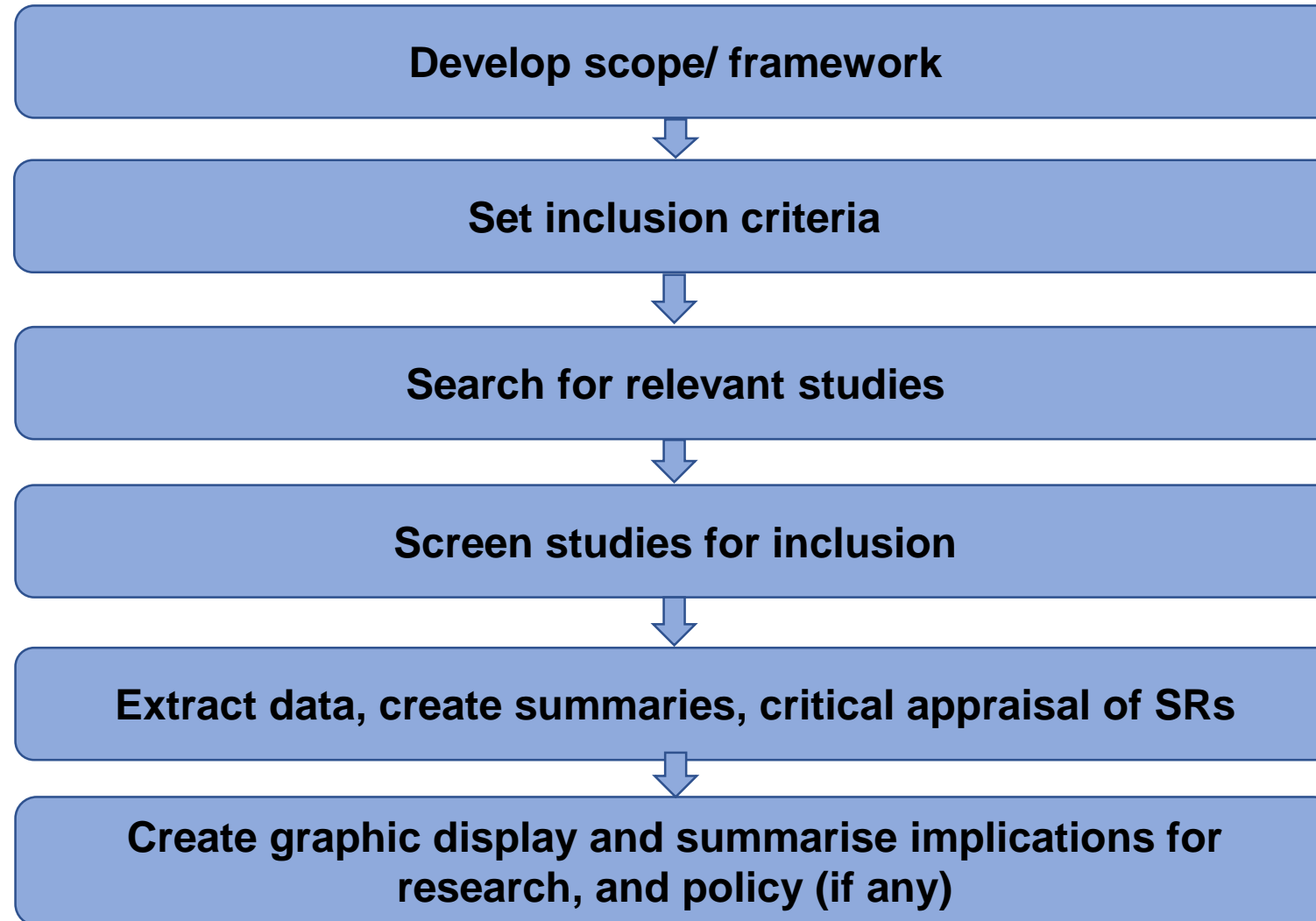
Where are the
gaps in
evidence?



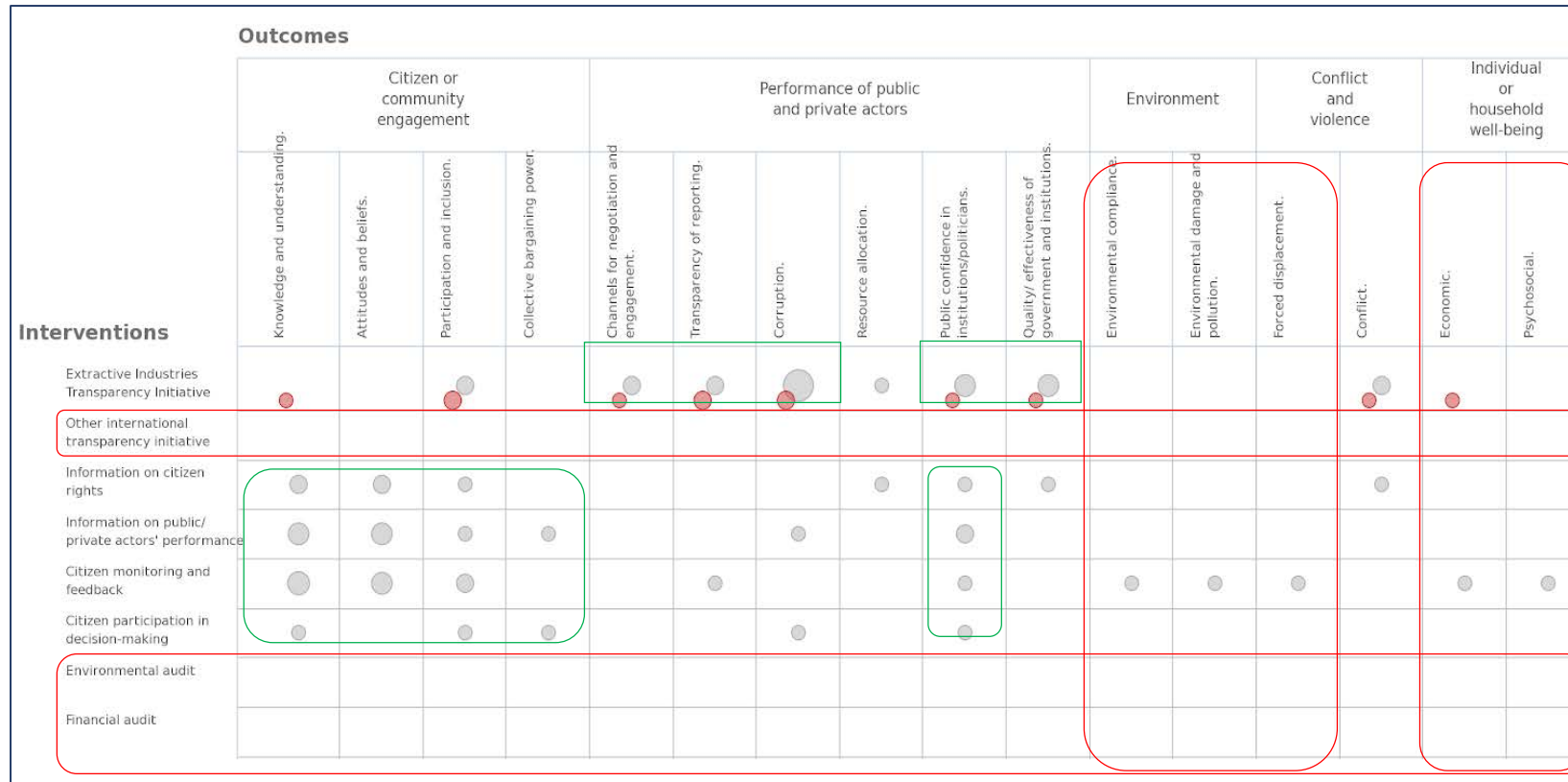
Evidence Gap Maps – identifying the evidence and the gaps



EGM standards in brief



Key Evidence Gaps



Funding research that matters

Identify 'absolute' gaps
Do primary studies

Identify 'synthesis gaps'
Do systematic reviews



Tool to inform institutional strategies and assessments

Assess programme portfolio against availability of evidence

⇒ overlap between priorities and available evidence?

⇒ is investment consistent with the evidence?

Inform policy and programming discussions

⇒ develop common understandings

⇒ provide access to best available evidence on effects

Contribute to Monitoring, Evaluation and Learning strategies

⇒ inform investment in impact evaluations and systematic reviews

⇒ organising framework for other evaluations



Evidence Gap Maps – some examples

<http://www.3ieimpact.org/evidence-hub/evidence-gap-maps>

[Intimate partner violence prevention EGM](#)

[Agricultural Innovations EGM](#)

[Land use change and forestry EGM](#)

[WASH EGM](#)

[Peacebuilding EGM](#)

[Adolescent sexual and reproductive health EGM](#)

[Map of Maps around the SDGs](#)



An Example: Challenges of Evaluating Climate Change Interventions

- Climate Change (CC) complicates the already difficult task of development:
 - Growth in developing countries can produce more greenhouse gases (GHG)  Development that mitigates CC
 - Developing countries are more vulnerable to consequences of climate change  Development that helps countries adapt to CC
- Agricultural growth and rural development can both cause and be affected by climate change.



Land use change and forestry - reconciling mitigation and food security

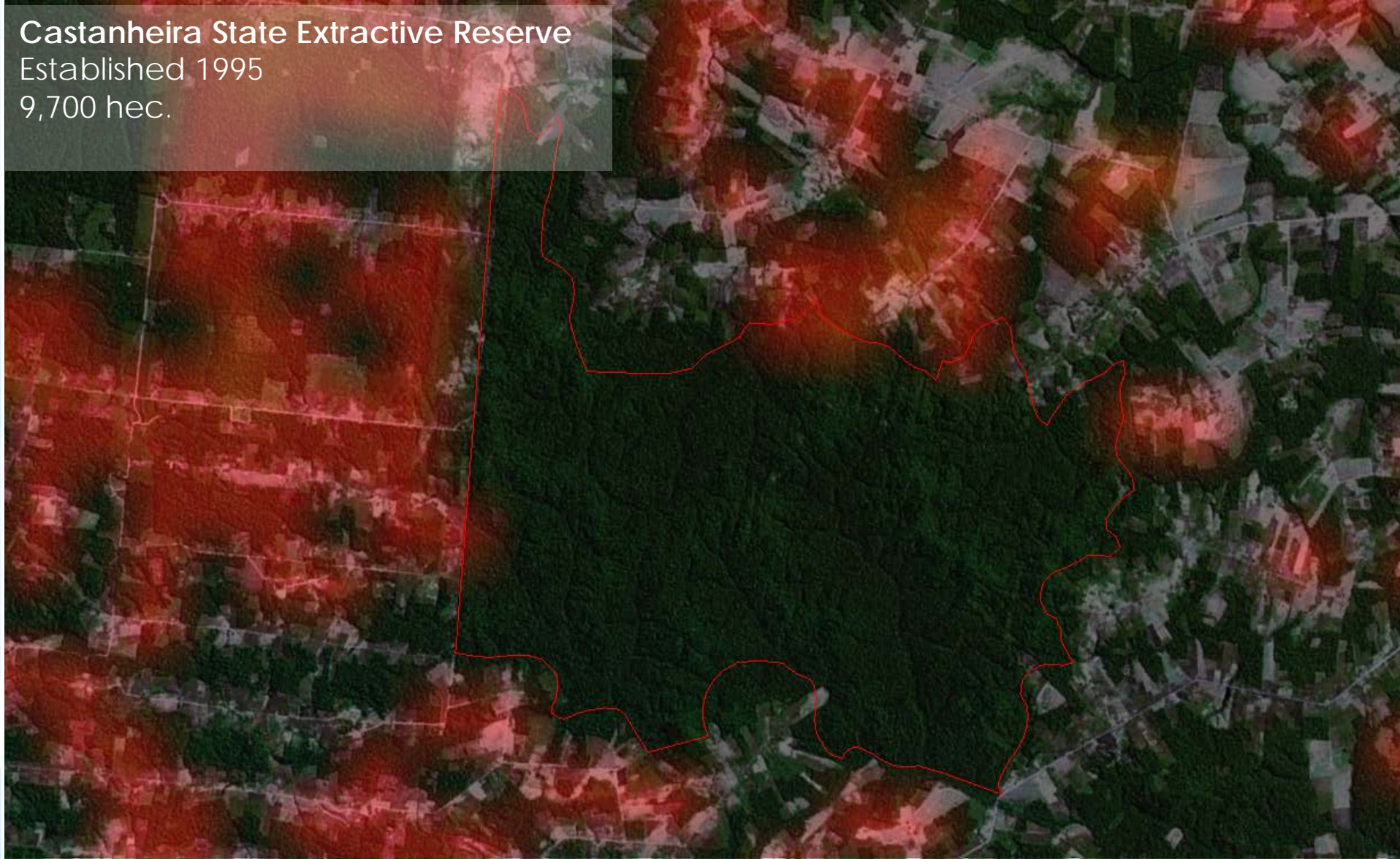


2019 Asian Evaluation Week, 2-6 September 2019, Kunming, People's Republic of China



We know some things: Protected Areas

Castanheira State Extractive Reserve
Established 1995
9,700 hec.



2019 Asian Evaluation Week, 2-6 September 2019, Kunming, People's Republic of China



But in Thailand this does not deter deforestation....

Naïve: Protection has a large effect on preventing deforestation.

Using big data helped to account for bias.

And helped to show that there is no effect.

Deforestation would not have occurred even without parks (static model).



www.shutterstock.com - 28651069



Land Use Change and Forestry EGM Scope



Birte Snilstveit, Jennifer Stevensor, Paul Fenton Villar, John Eyers, Celia Harvey, Steven Panfil, Jyotsna Puri, Madeleine McKinnon, "Land use change and forestry programmes" 3ie EGM Report 3, Nov 2016



2019 Asian Evaluation Week, 2-6 September 2019, Kunming, People's Republic of China

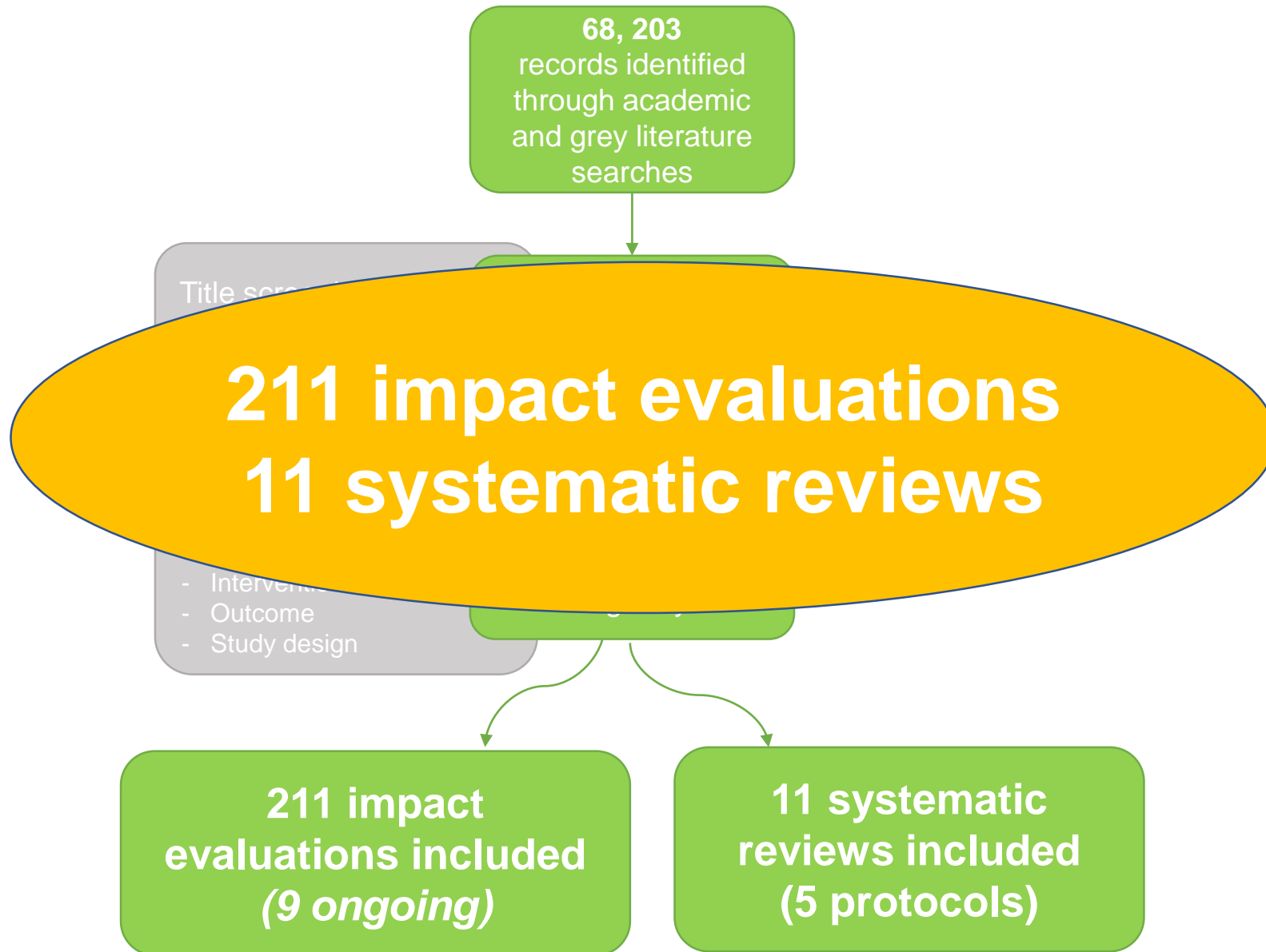


- Link to the online platform

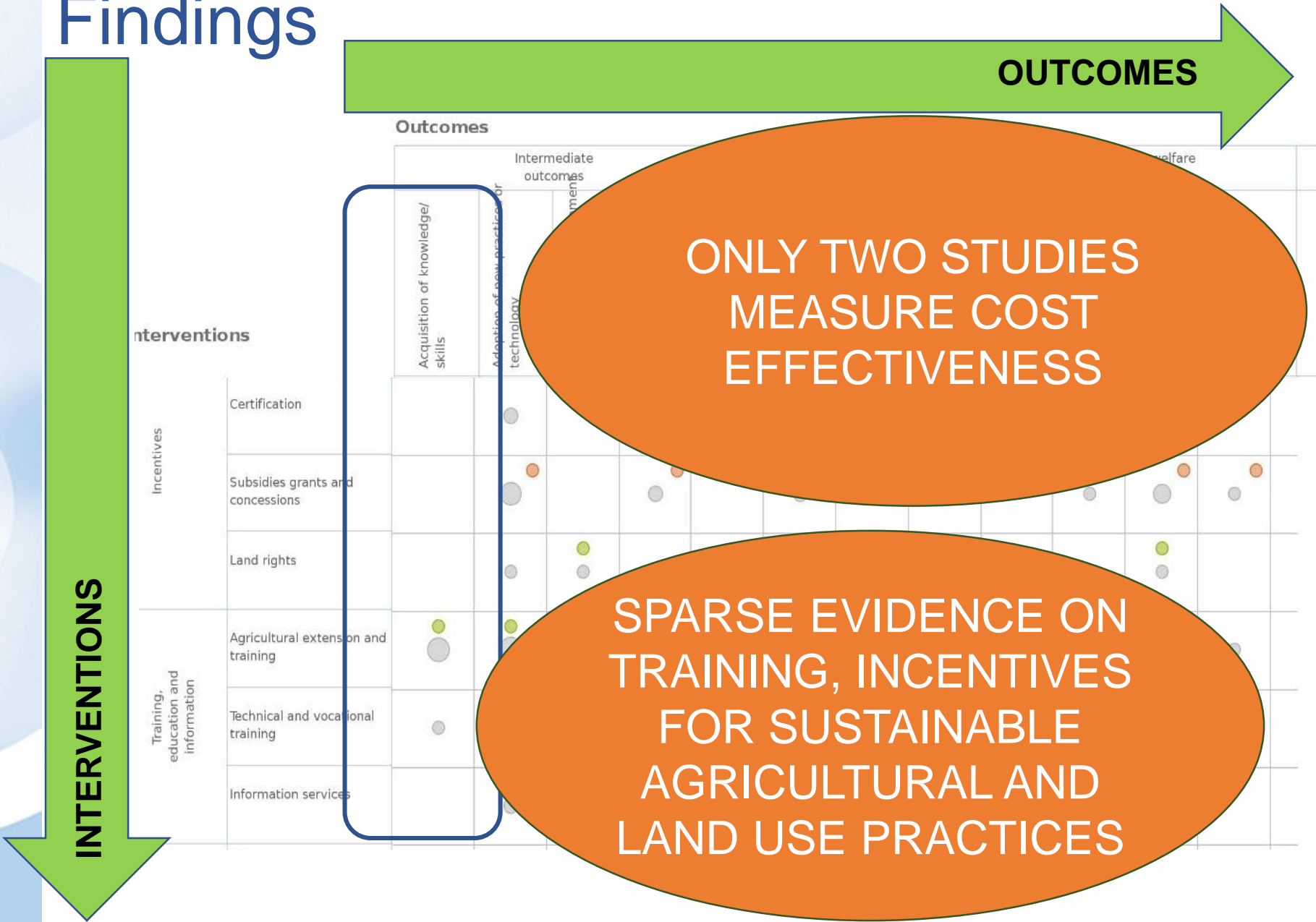
<http://gapmaps.3ieimpact.org/evidence-maps/land-use-change-and-forestry>



Land Use and Forestry: Search results



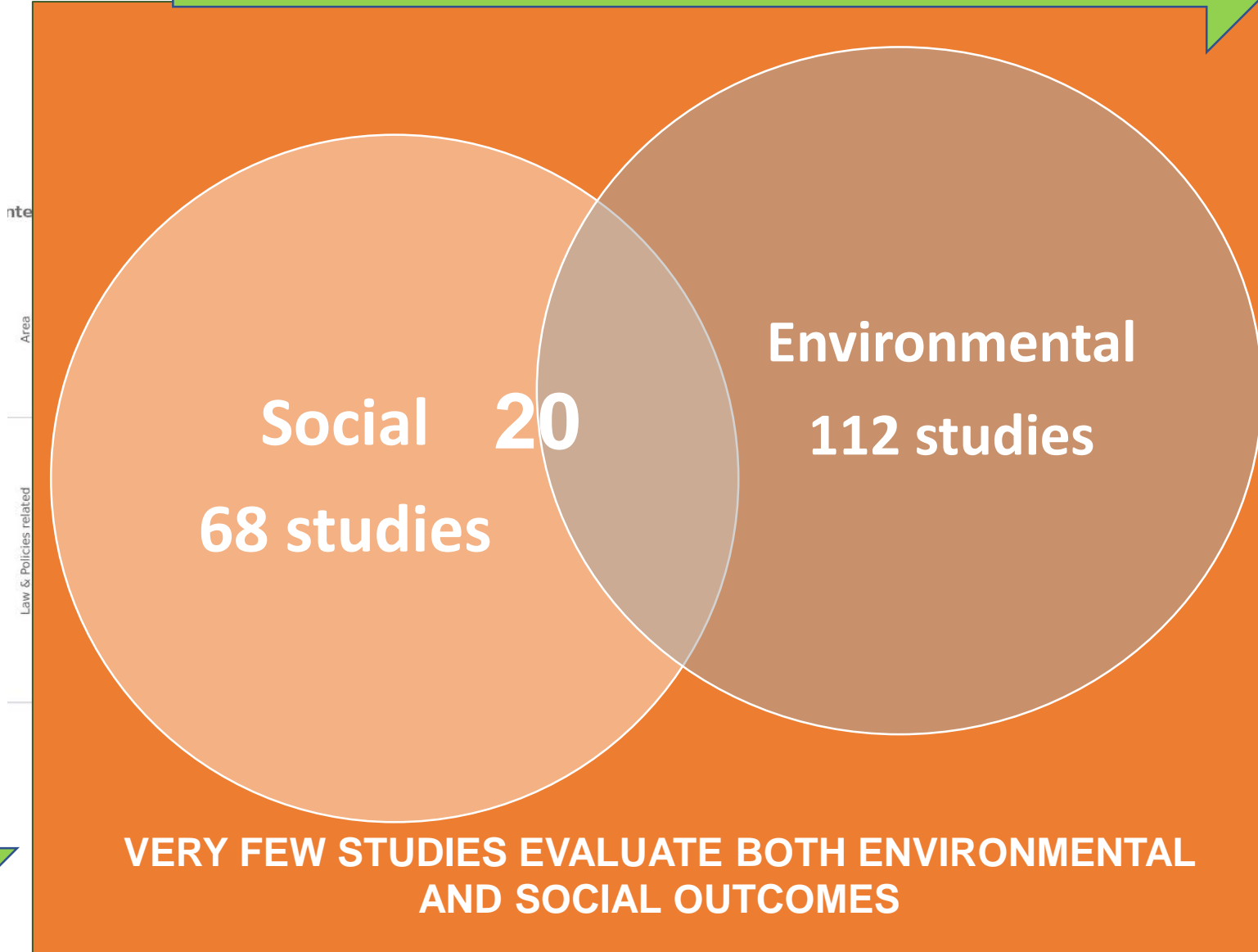
Findings



Findings

OUTCOMES

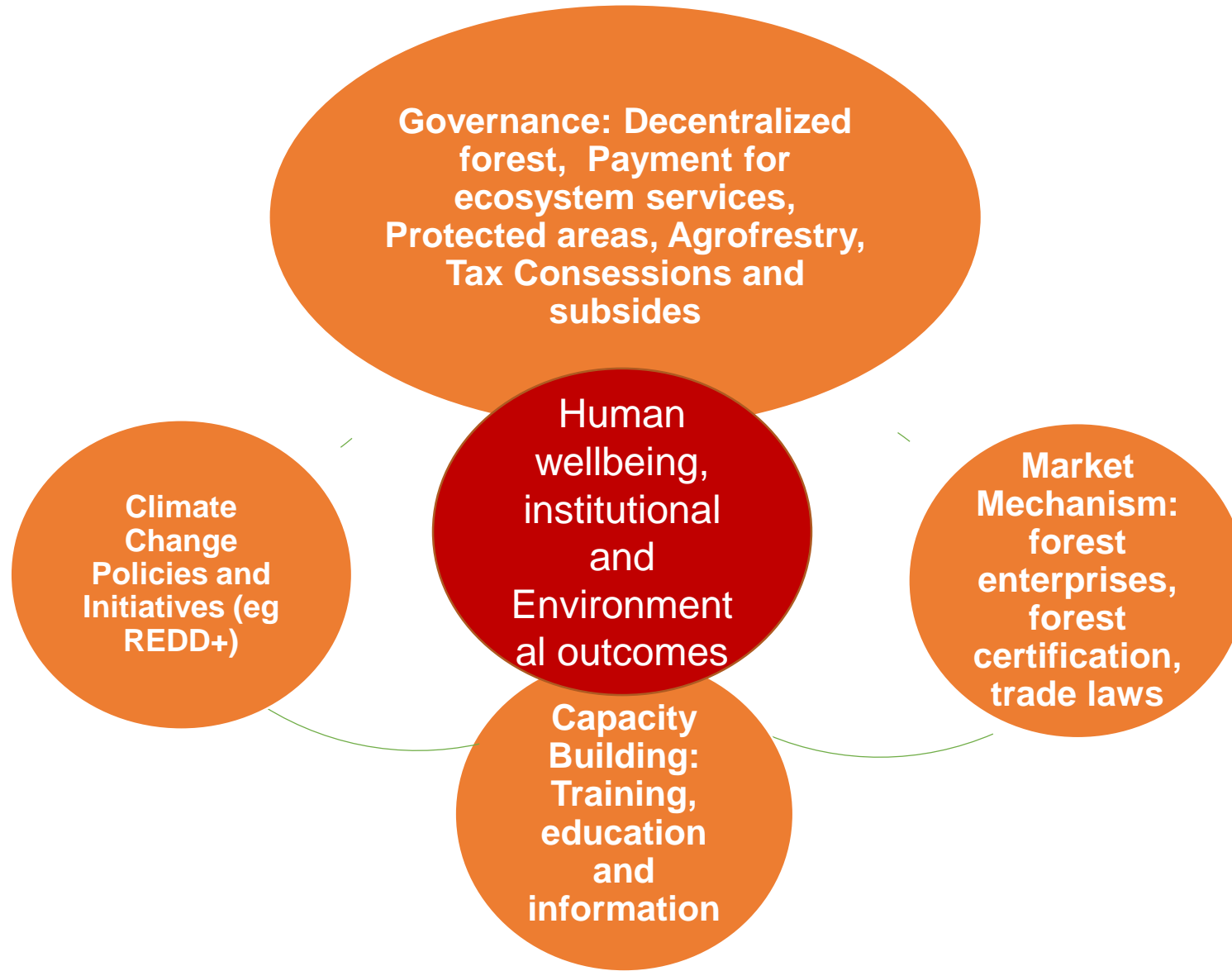
INTERVENTIONS



2019 Asian Evaluation Week, 2-6 September 2019, Kunming, People's Republic of China



Forest Conservation EGM



Jyotsna Puri, Megha Nath, Raag Bhatia, Louise Glew, "Examining the evidence base for forest conservation interventions," December 2016



2019 Asian Evaluation Week, 2-6 September 2019, Kunming, People's Republic of China



Session Takeaways

- Evidence Gap Maps (EGMs) have been a useful way to identify where evidence is and where it is not
- Density of evidence on complex topics such as climate change interventions can:
 - Help policy makers see if they are operating in evidence-rich or evidence-poor environments
 - Help research funders prioritize
- Aside from developing EGMs, 3ie has been on the forefront of evidence generation and use in LMICs, as well as data sharing and transparency
 - 3ie has the largest repository of impact evaluations and systematic reviews in international development
 - <http://www.3ieimpact.org/evidence-hub/systematic-review-repository>



Thank you



www.3ieimpact.org

 @3ieNews

 /3ieimpact

 /3ievideos

 international-initiative-for-impact-evaluation

New Delhi London Washington, DC

2019 Asian Evaluation Week, 2-6 September 2019, Kunming, People's Republic of China